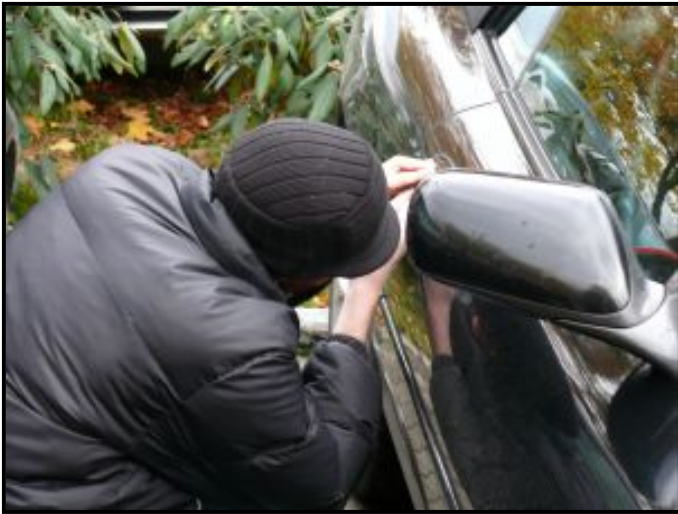


A monthly publication filled with industry news, maintenance and safety tips, upcoming events, special coupons, and more!



Auto Theft...

America's Most Stolen Cars

According to the National Insurance Crime Bureau.

Here are the 10 most stolen vehicles as reported by the NICB — the number in parentheses is the model year most stolen:

- 1) Honda Civic (1995)
- 2) Honda Accord (1991)
- 3) Toyota Camry (1989)
- 4) Ford F-150 (1997)
- 5) Chevrolet C/K 1500 (1994)
- 6) Acura Integra (1994)
- 7) Dodge Ram Pickup (2004)
- 8) Nissan Sentra (1994)
- 9) Toyota Pickup (1988)
- 10) Toyota Corolla (2007)

Theft Prevention Tips

- 1) Lock your vehicle, close all windows and sunroof, and take your keys with you.
- 2) Never hide your keys in or on your vehicle. Thieves know all the hiding spots.
- 3) Don't leave valuables in plain site that may attract thieves.
- 4) Park in well lit areas in plain view with plenty of pedestrian traffic.
- 5) Never leave your car running while unattended at an ATM or for quick stops.
- 6) Leave your car in Park (or in gear) and emergency brake on to prevent towing thefts. Also turn your wheels toward the curb for additional security. When in a driveway, park with drive wheels closer to the house – away from the street.
- 7) If you have a garage – use it.
- 8) If you have an alarm – use it.
- 9) Don't let your guard down on older vehicles. Parts from these vehicles are in high demand.
- 10) Look into add on theft protection devices like fuel cut off switches, steering locks, wheel locks, etc.



America's No. 1 Most Stolen Car
The 1995 Honda Civic



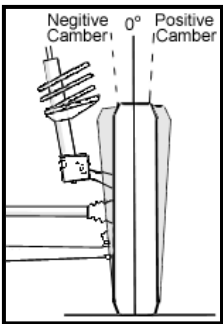
Wheel Alignment...

A wheel alignment consists of adjusting the angles of the wheels so that they are perpendicular to the ground and parallel to each other. Wheel alignment is important for maximizing tire life and ensuring that a vehicle tracks properly when driving along a straight and level road.

Wheel Alignment vs. Balance

Wheel Alignment is often confused with Wheel Balancing. While both affect ride and handling, they really have nothing to do with each other. If a wheel is out of balance, it will cause a vibration at highway speeds that can be felt in the steering wheel and/or the seat. If the alignment is out, it can cause excessive tire wear and steering or tracking problems.

A typical wheel alignment is made up of 3 measurements:



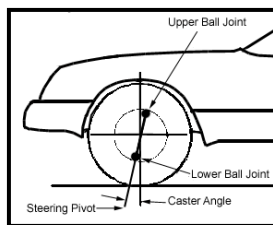
1. Camber

Camber is the angle of the wheel, measured in degrees, when viewed from the front of the vehicle. If the top of the wheel is leaning out from the center of the car, then the camber is positive, if it's leaning in, then the camber is negative. When off, this will cause uneven tire tread wear.



2. Caster

Caster is the angle of this steering pivot, measured in degrees, when viewed from the side of the vehicle. If the top of the pivot is leaning toward the rear of the car, then the caster is positive, if it is leaning toward the front, it is



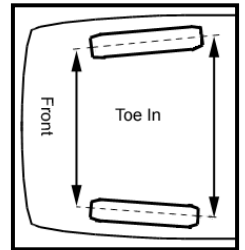


**Graeves Auto & Appliance is a
Certified American Car Care Center**
For more information please visit:
www.graevesauto.com

negative. If the caster is out of adjustment, it can cause problems in straight line tracking.

3. Toe In

Toe-in means that the fronts of the tires are closer to each other than the rears. Toe-out is just the opposite. An incorrect toe-in will cause rapid tire wear to both tires equally.



Did You Know?

The Boston Red Sox, then called the Pilgrims, won the 1st World Series in October of 1903 defeating the Pittsburgh Pirates.

+++++

Dear Abby and Ann Landers were identical twins.

+++++

The Washington Monument stands 555 feet, 5-1/8 inches tall.

+++++

The orbital velocity of the earth is 18.51 miles/second.

+++++

The 1st movie theater in the U.S. opened in New Orleans in 1896 and admission was 10 cents.

Keep checking your e-mail and the website for new flyers and specials!
www.graevesauto.com