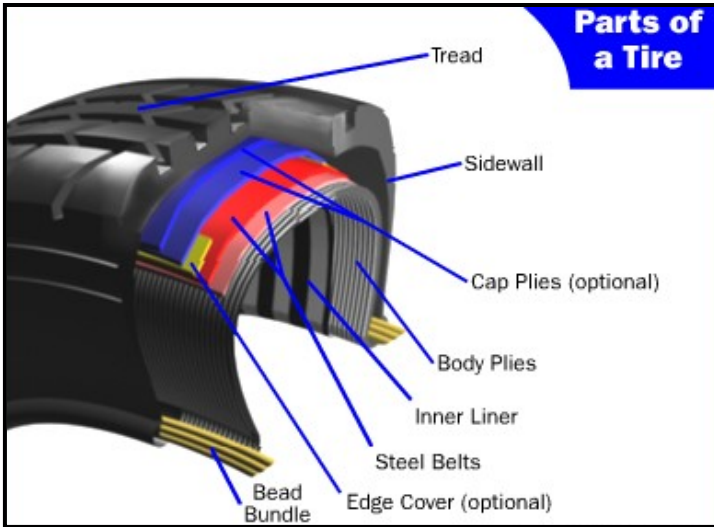


A monthly publication filled with industry news, maintenance and safety tips, upcoming events, special coupons, and more!



How Tires are Made...

As illustrated above, a tire is made up of several different components.

- The **bead** is a loop of high-strength steel cable coated with rubber. It gives the tire the strength it needs to stay seated on the wheel rim and to handle the forces applied by tire mounting machines when the tires are installed on rims.
- The **body** is made up of several layers of different fabrics, called **plies**. The most common ply fabric is **polyester cord**. The cords in a radial tire run perpendicular to the tread. Some older tires used **diagonal bias tires**, tires in which the fabric ran at an angle to the tread. The plies are coated with rubber to help them bond with the other components and to seal in the air.

A tire's strength is often described by the number of plies it has. Most car tires have two body plies.

- In steel-belted radial tires, **belts** made from steel are used to reinforce the area under the tread. These belts provide puncture resistance and help the tire stay flat so that it makes the best contact with the road.
- Some tires have **cap plies**, an extra layer or two of polyester fabric to help hold everything in place. These cap plies are not found on all tires; they are mostly used on tires with higher speed ratings to help all the components stay in place at high speeds.
- The **sidewall** provides lateral stability for the tire, protects the body plies and helps keep the air from escaping. It may contain additional components to help increase the lateral stability.
- The **tread** is made from a mixture of many different kinds of natural and synthetic rubbers. The tread and the sidewalls are extruded and cut to length. The tread is just smooth rubber at this point; it does not have the tread patterns that give the tire traction.



Graeves Auto & Appliance is a
Certified American Car Care Center

For more information please visit:

www.graevesauto.com

October

Fall Special!
at Graeves Auto & Appliance



**The Autumn chill has arrived.
Make sure you have all the heat
you need for you and your
passengers!**

**Stop by Graeves Auto for a FREE heater inspection
and receive 10% off any heater repairs.**

GRAEVES
AUTO & APPLIANCE

Family owned and operated
serving Montgomery County
since 1952...

COUPON

Print and bring this coupon with you to
Graeves Auto & Appliance at the time of purchase
and receive a FREE heater inspection and 10% off any
heater repairs (includes all parts and service).

(This coupon may not be used in conjunction with any
other promotions or coupons.)

Coupon expires: October 31, 2011

COUPON