

GRAEVES
AUTO & APPLIANCE

Family owned and operated
serving Montgomery County
since 1952...

the Shop Rag

A monthly publication filled with industry news, maintenance and safety tips, upcoming events, special coupons, and more!



Tires Demystified...

What do all those numbers and letters on the side of your tires mean? Let's take a look...

Stamped on every tire's sidewall are several markings. Usually raised rubber and not colored, these markings can be difficult to read at times. Wiping a wet rag or sponge over these markings can help make these letters and numbers more visible.

Usually, the largest letters (sometimes raised and colored white) are usually the manufacturer's name and tire model (i.e., Michelin - Cross Terrain SUV or Goodyear - Wrangler RT/S). These markings are usually found in the center of the sidewall.

Next there are a sequence of medium sized letters and numbers that indicate the dimensions and type of tire. For a tire code that begins with a three-digit number, those first three numbers refer to the

cross-section width measured in millimeters. Then there is a forward slash, and the next numbers represent the aspect ratio of the tire (the ratio of the tire's height to its width). The final number in this code will be the rim diameter, measured in inches.

An example of this kind of tire code could be "235/75R16." This code indicates that the tire has a cross-section (tread) width of 235 mm and an aspect ratio 75 (height of sidewall from inner bead to the top of the tread as a % of the width - 75% of 235mm), and that it is a (R)adial tire for 16-inch wheels.

You will read tire codes that begin with a two-digit number a little differently. The first number is the diameter of the tire, measured in inches. The second number is the cross-section width in inches. And as in the previous example, the last number represents the rim diameter.

So, for example, a code that reads "32x11.0R16" indicates that the tire is 32 inches in diameter, with a cross-section of 11 inches, and that it is a (R)adial tire for 16-inch wheels.



Graeves Auto & Appliance is a
Certified American Car Care Center

For more information please visit:

www.graevesauto.com

(Tires - con't)

Car Care "Tip of the Month"

These tire codes may also be preceded or followed by additional letter designations. For example, "LT" would indicate that the tire is rated for Light Trucks, and "P" would indicate a Passenger car tire.

One more important marking would be the tire pressure ratings for the tire. This marking is usually the smallest of the markings and can be difficult to locate and read. This usually indicates the maximum tire pressure in PSI (pounds per square inch) and the recommended tire pressure in cold weather.

For correct tire pressure for your vehicle, you should refer to the label usually located on the driver side door jamb - visible only when the door is opened. Make sure the vehicle's recommended tire pressure does not exceed the tire's maximum pressure rating.



Fix Small Windshield Cracks

Have a rock chip, crack, or ding in your windshield? Take your car to a certified windshield repair shop. For far less cost than replacing the windshield, they can fix small chips and

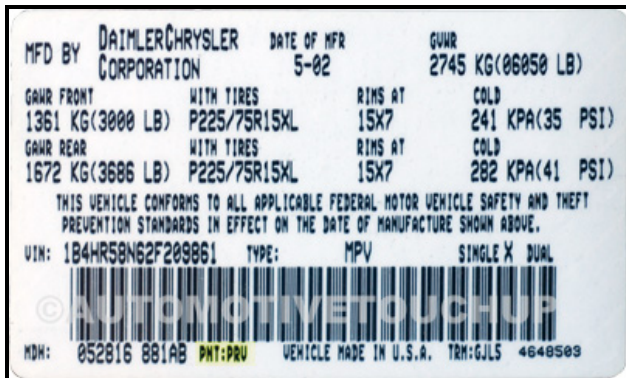
cracks. Do not procrastinate, these repairs will keep the chips and cracks from spreading to the point where you will need to replace the entire windshield. They will also restore the structural integrity of the windshield, and improve clarity.



In the Community...

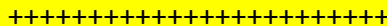
Olney Community Night - Taste of Olney!

Registration is now open for businesses, agencies and non-profit organizations interested in exhibiting at the Olney Chamber of Commerce's 32nd Annual Community Night, the oldest business expo in Montgomery County. The event is scheduled for 5:00-8:30 p.m. on Wednesday, October 5 at the Longwood Community Center. Community Night features a business expo of 100+ displays and the Taste of Olney where the area's premier restaurants present their tasty offerings. Exhibitors and restaurants may register find more information at: www.olneymd.org

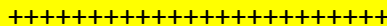


Did You Know?

The first drive-in movie theater in America opened in Camden, New Jersey in 1933. Admission was 20 cents per person and 25 cents for the car.



There are over 2,500 different snakes in the world. Approximately 400 are poisonous.



A top fuel dragster accelerates from 0 - 100 mph in less than 0.8 seconds; this produces a force nearly five times that of gravity.

See Page 3 for this month's special coupon!

September Back to School Special!

at Graeves Auto & Appliance

15% Off Any Oil Change or Tune Up



School is back in session.

Please drive carefully!



GRAEVES
AUTO & APPLIANCE

Family owned and operated
serving Montgomery County
since 1952...

COUPON

Print and bring this coupon with you to Graeves Auto & Appliance at the time of purchase and receive a 15% discount on any oil change or tune up (includes all parts and service).

(This coupon may not be used in conjunction with any other promotions or coupons.)

Coupon expires: September 30, 2011

COUPON